

If you see blank screen after login, you need to add Terminal Server Active X in Mozilla.



To install Terminal Server Active X in Mozilla, download the IE Tab from

<https://addons.mozilla.org/en-US/firefox/addon/1419>. Save the file on your local computer.

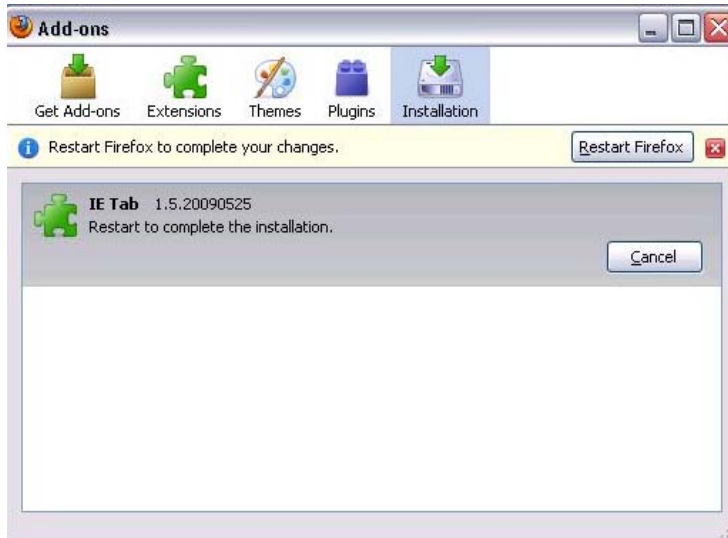
To Install IE Tab, Open Mozilla Firefox

1. Click on Install Now

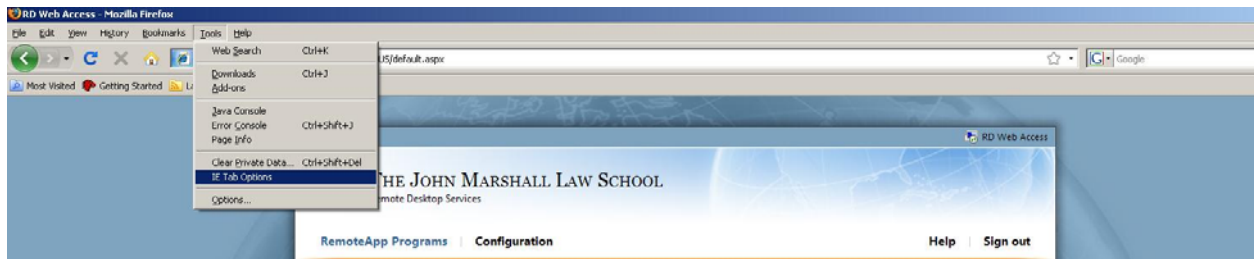


If you don't see this on Mozilla startup, drag the saved file (IE Tab) anywhere on Mozilla window and this screen will appear.

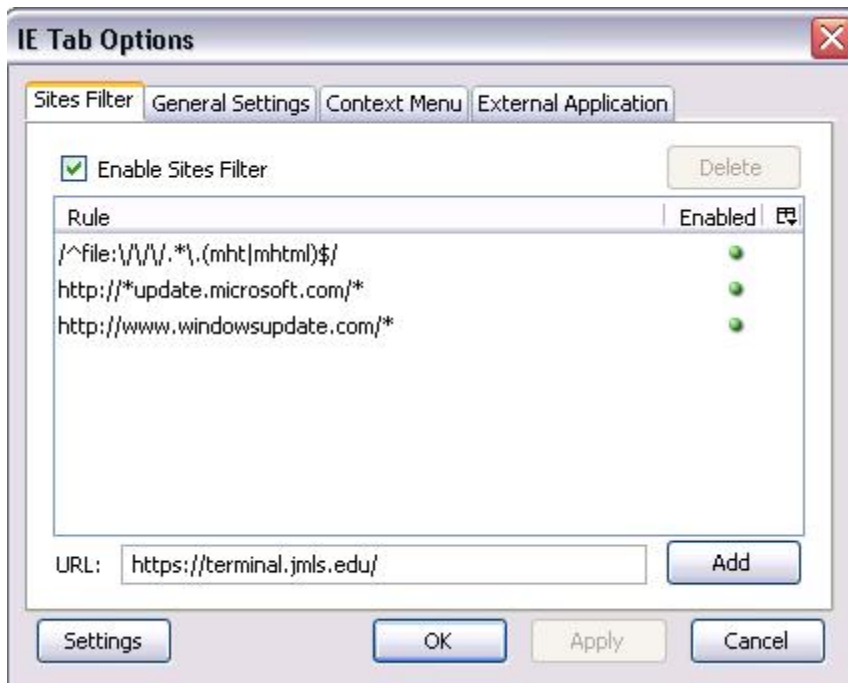
2. After the installation, Click on Restart Firefox. **It will close all the opened Firefox windows**



3. Go to <https://terminal.jmls.edu/rdweb>
4. Click on IE Tab Options



5. On the next screen, Click **Add** followed by OK



6. If still RemoteApps program window is blank, sign out and log back in.